

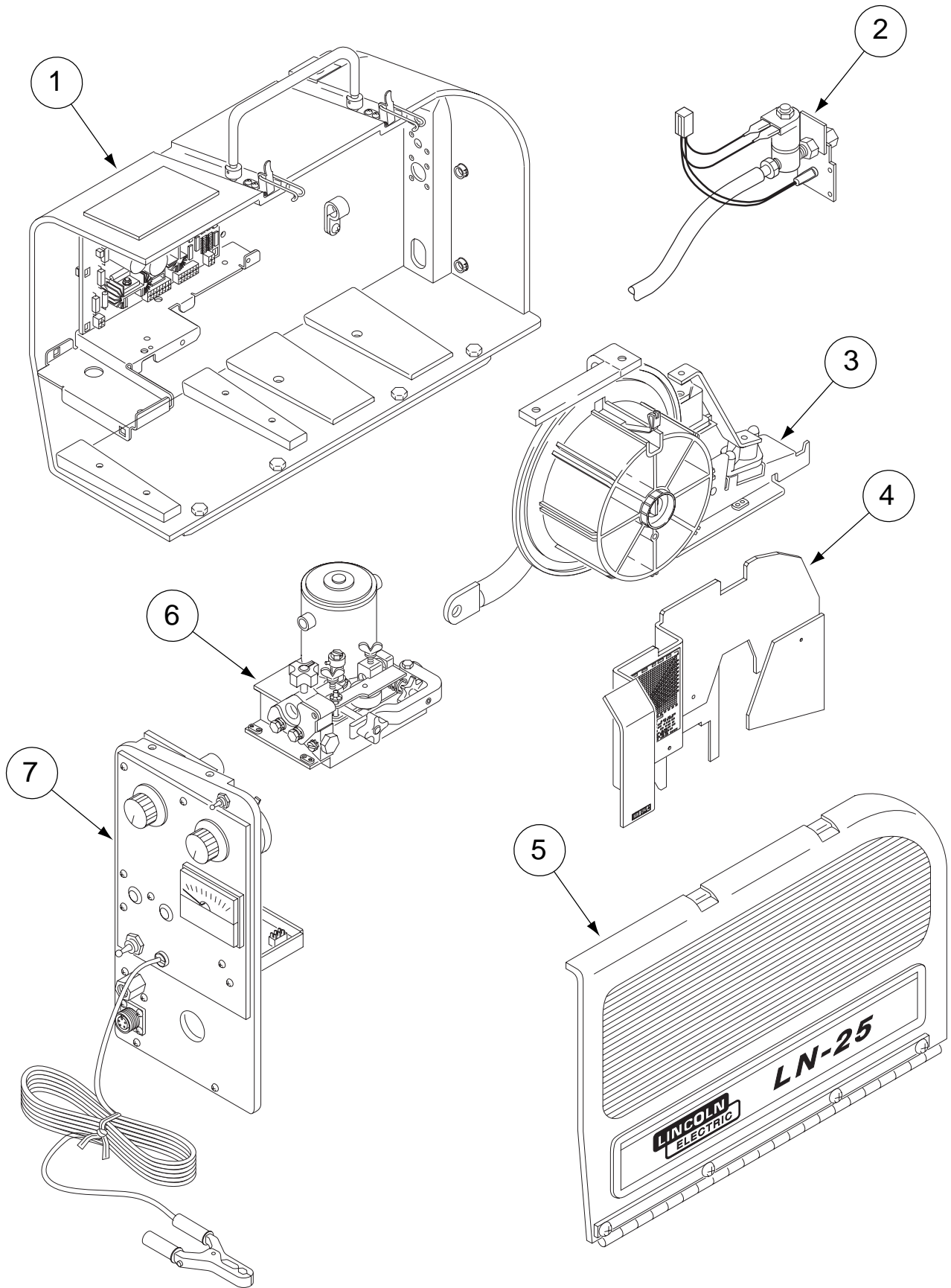
PARTS LIST FOR LN-25

Index of Sub Assemblies
Illustration of Sub Assemblies
Index of Sub Assemblies
Illustration of Sub Assemblies
Index of Sub Assemblies
Illustration of Sub Assemblies
Index of Sub Assemblies
Illustration of Sub Assemblies

LN-25



ILLUSTRATION OF SUB-ASSEMBLIES



Index of Sub Assemblies

LN-25

(See P-175 for Codes Below 10200)

For Codes: 10556,10558,11144,11145, 11282 & 11283

Do Not use this Parts List for a machine if its code number is not listed. Contact the Service Department for any code numbers not listed.

Use the Illustration of Sub-Assemblies page and the table below to determine which sub assembly page and column the desired part is located on for your particular code machine.

Indicates a change this printing.

Sub Assembly Item No.									
SUB ASSEMBLY PAGE NAME	K431-1 Remote Output Control Module	42 Volt Remote Control Module	K432 Remote Control Cable	K439 Remote Cable Extension (50')	K433 Power Source Remote Box	K443-[] Contactor Kit			
PAGE NO.	P-333-K	P-333-L	P-333-M	P-333-N	P-333-P	P-333-U			
CODE NO.									
10556	1	1	1	1	1	1			
10557	1	1	1	1	1	1			
10558	1	1	1	1	1	1			
11144	1	1	1	1	1	2			
11145	1	1	1	1	1	2			
11282	1	1	1	1	1	2			
11283	1	1	1	1	1	2			



Illustration of Sub Assemblies

NOTES

Index of Sub Assemblies

Index of Sub Assemblies

Index of Sub Assemblies

Index of Sub Assemblies

LN-25



OPTIONAL EQUIPMENT LISTING

Miscellaneous Options Available for your machine are listed below:

Indicates a change this printing.

DESCRIPTION	PART NUMBER
* Gas Solenoid Kit (for K428 LN-25 Only)	Order K430-2
Gas Flow Timer Kit	Order K434-1
Remote Output Control Kit	Order K431-1
115 VAC Power Source Remote Box	Order K433
Remote Control Cable Assembly	Order K432
Remote Extension Cable Assembly	Order K439
Internal Contactor Kit (For K428 or K446 Models above codes 9200 Only)	Order K443-2
Δ Ω 42V Remote Output Control Module	Order K624-1
Remote Control Cable Assemblies	Order K625, K626, K627
+ Pulse Power Adapter Kit	Order K460-1
Pulse Power Cable Assembly	Order K461
◇ Remote Voltage Control Kit (with Terminal Strip)	Order K444
◇ Remote Voltage Control Kit (with 6 Pin Amphenol Connector)	Order K444-1
◇ Remote Voltage Control Kit (with 14 Pin Amphenol Connector)	Order K444-2
Spindle Adapter for 14 lb Coils	Order K435
Spindle Adapter for 8" O.D. Spools	Order K468
Jumper Plug Kit	Order K484
Rear Handle Kit (Codes 9383 and above)	Order K577-1
Readi-Reel Adapter	Order K363-P

* See S.O. for Length

+ For K428 or K446 Models: Requires K461. Cannot be used with K431-1, K443-2, or K444 Options Installed.

◇ Not required if using K431-1 or K460-1.

Δ Requires K625- [], K626- [], or K627- [] Power Input Cable Assembly.

Ω Cannot be used with K439 or K443-2 Contactor Kit>

Index of Sub Assemblies

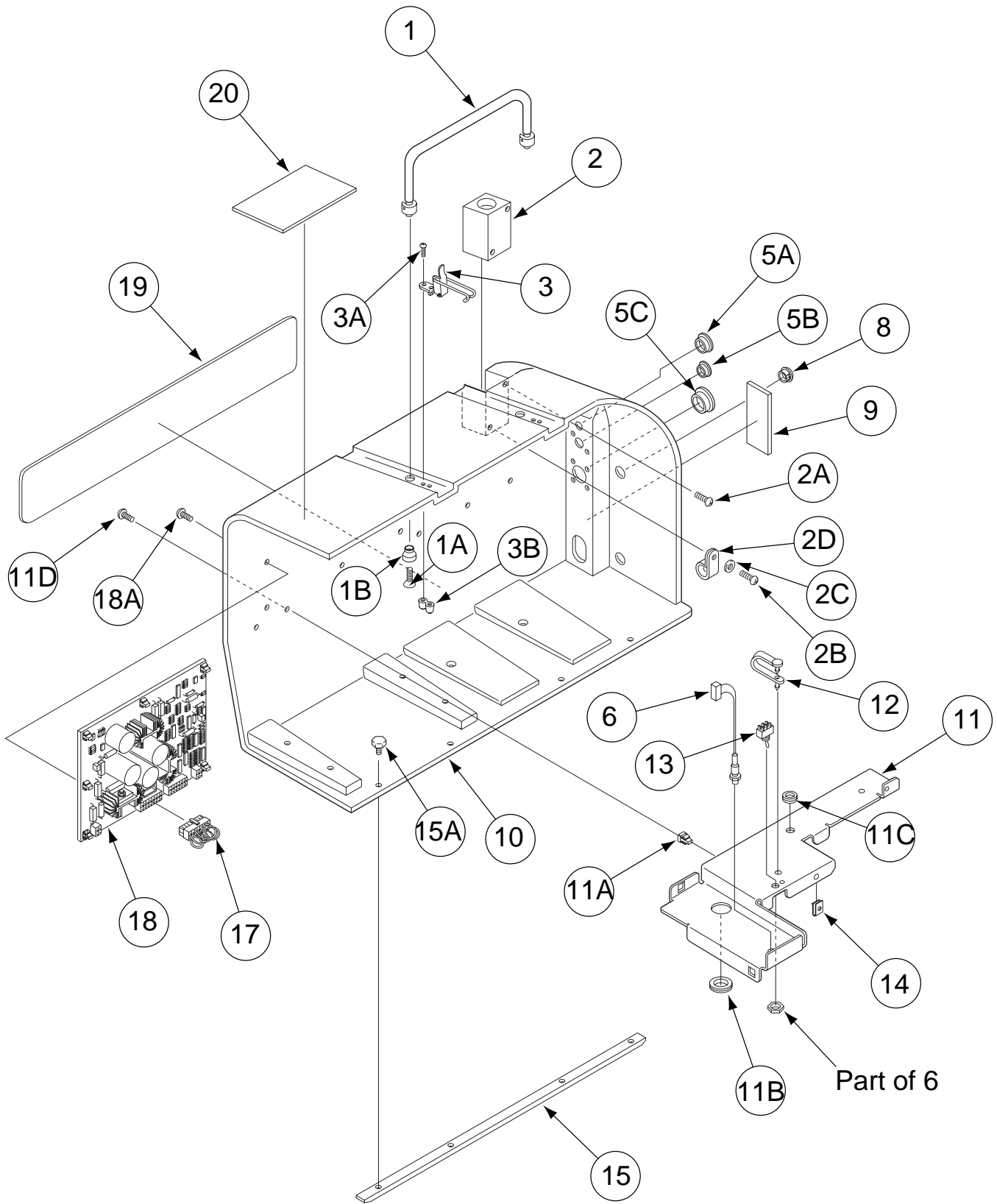
Indicates a change this printing.

Use only the parts marked "x" in the column under the heading number called for in the model index page.

DESCRIPTION	PART NO.	QTY.	1	2	3	4	5	6	7	8	9
Miscellaneous Leads & Sleeving (K433)	S18171	1	X								
ESD Snubber Assembly (Code 10556 & 11144 Euro only)	S22937	1	X								
Wiring Diagram (Codes 10556, 10557 and 10558)	L10925	1	X								
Wiring Diagram (Codes 11144, 11145, 11282 & 11283)	G4679	1	X								#
Strain Relief Clamp	S24287	1	X								
Strain Relief Bracket	S24288	1	X								

Index of Sub Assemblies

Case Assembly



Indicates a change this printing.

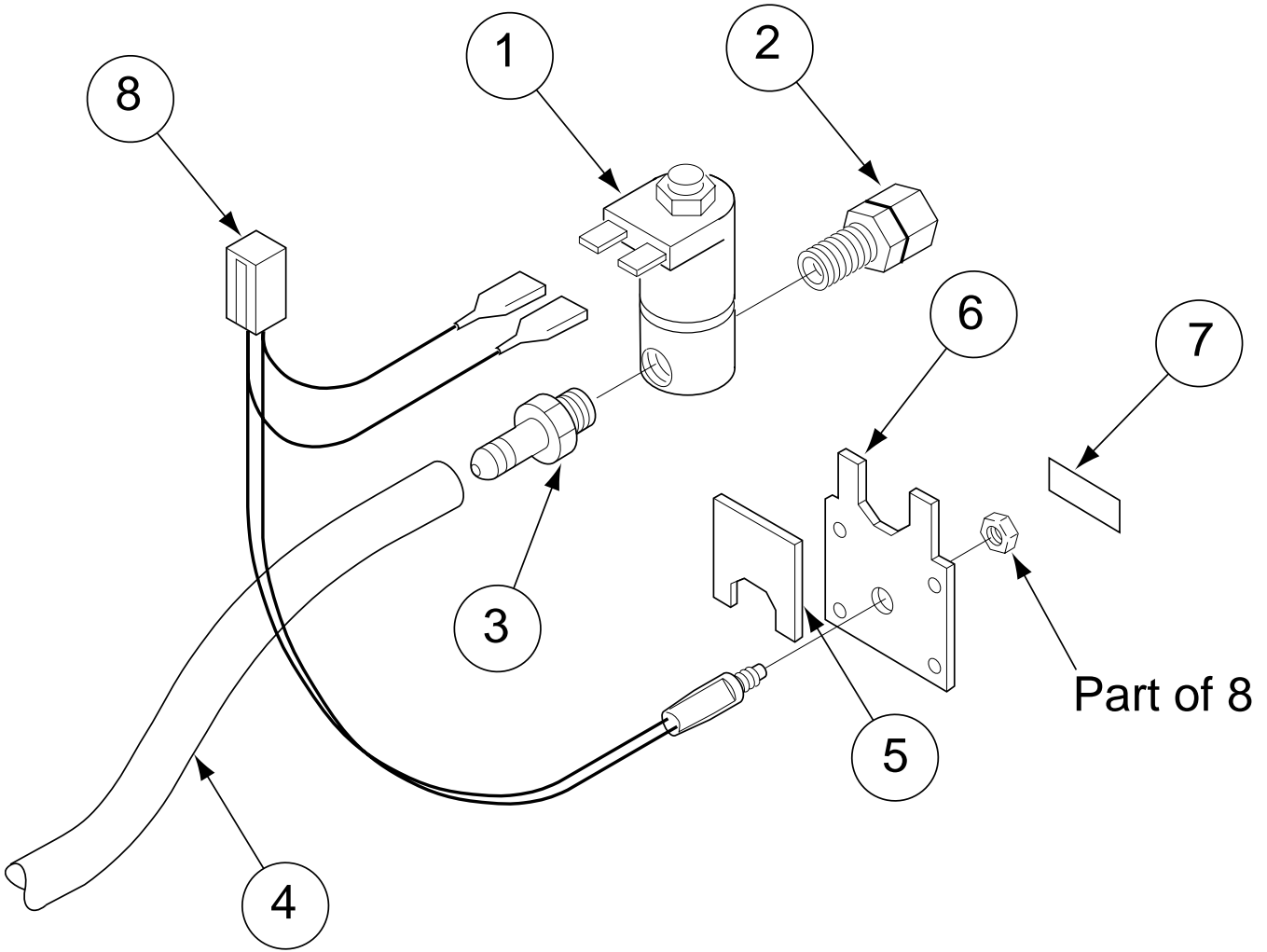
Use only the parts marked "x" in the column under the heading number called for in the model index page.

ITEM	DESCRIPTION	PART NO.	QTY.	1	2	3	4	5	6	7	8	9
1	Handle Assembly	S18170	1	X	X	X	X	X				
1A	Flat Head Screw	CF000321	2	X	X	X	X	X				
1B	Handle Insulator	T15104	2	X	X	X	X	X				
2	Gun Holder	M15469	1	X	X	X	X	X				
2A	Self Tapping Screw	S8025-62	1	X	X	X	X	X				
2B	Self Tapping Screw	S8025-62	1	X	X	X	X	X				
2B	Self Tapping Screw	S8025-82	1	•	X	X	•	X				
2C	Plain Washer	S9262-3	1	•	X	X	•	X				
2D	Lead Clamp	T12563-7	1	•	X	X	•	X				
3	Door Latch	S18137	2	X	X	X	X	X				
3A	Self Tapping Screw	S8025-62	4	X	X	X	X	X				
3B	Insulated Latch Nut	T15090	2	X	X	X	X	X				
5A	Plug Button	T10397-4	1	X	•	•	X	•				
5B	Plug Button	T10397-2	1	X	•	•	X	•				
5C	Plug Button	T10397-20	1	X	X	X	X	X				
6	Cold Inch Switch Assembly	S18250-589	1	•	•	X	•	X				
8	Plug Button	T10397-3	2	X	X	X	X	X				
9	Caution Decal	T13086-77	1	•	•	X	•	X				
10	Case	G2342-2	1	X	X	X	X	X				
11	Box Panel	L10927 \emptyset	1	X	X	X	X	X				
11A	Support Nut	S14020-6	4	X	X	X	X	X				
11B	Bushing	T12380-4	1	X	X	X	X	X				
11C	Bushing	T12380-2	1	X	X	X	x	X				
11D	Self Tapping Screw	S8025-98	4	X	X	X	X	X				
12	Cable Hanger	T13496-2	1	X	X	X	X	X				
13	Toggle Switch	T13381-6	1	X	X	X	X	X				
14	#10-24 Speed Nut	T11525-1	1	X	X	X	X	X				
15	Skid	S20195	2	X	X	X	X	X				
15A	Insulated Fastener	T15088	8	X	X	X	X	X				
17	Jumper Plug	T13498-21	1	X	X	X	X	X				
18	Control P.C. Board Assembly	G3425- []	1	X	X	X	•	•				
18	Control P.C. Board Assembly	L12253-[]	1	•	•	•	X	X				
18A	Self Tapping Screw	S8025-97	8	X	X	X	X	X				
19	Logo decal	S18241-1	1	X	X	X	X	X				
20	Warning Decal	S20601	1	X	X	X	X	X				
21	Plug & Lead Assembly	S18250-905	1	•	•	•	X	X				

Note: When ordering new printed circuit boards indicate the dash number [] of the "Old" board that is to be replaced. This will aid Lincoln in supplying the correct and latest board along with any necessary jumpers or adapters. The dash number brackets [] have purposely been left blank so as to eliminate errors, confusion and updates.

Index of Sub Assemblies
Sub Assembly Illustration

K430-2 Gas Solenoid Kit



Index of Sub Assemblies

Part Numbers

Index of Sub Assemblies

Part Numbers

Index of Sub Assemblies

Part Numbers

Index of Sub Assemblies

Part Numbers

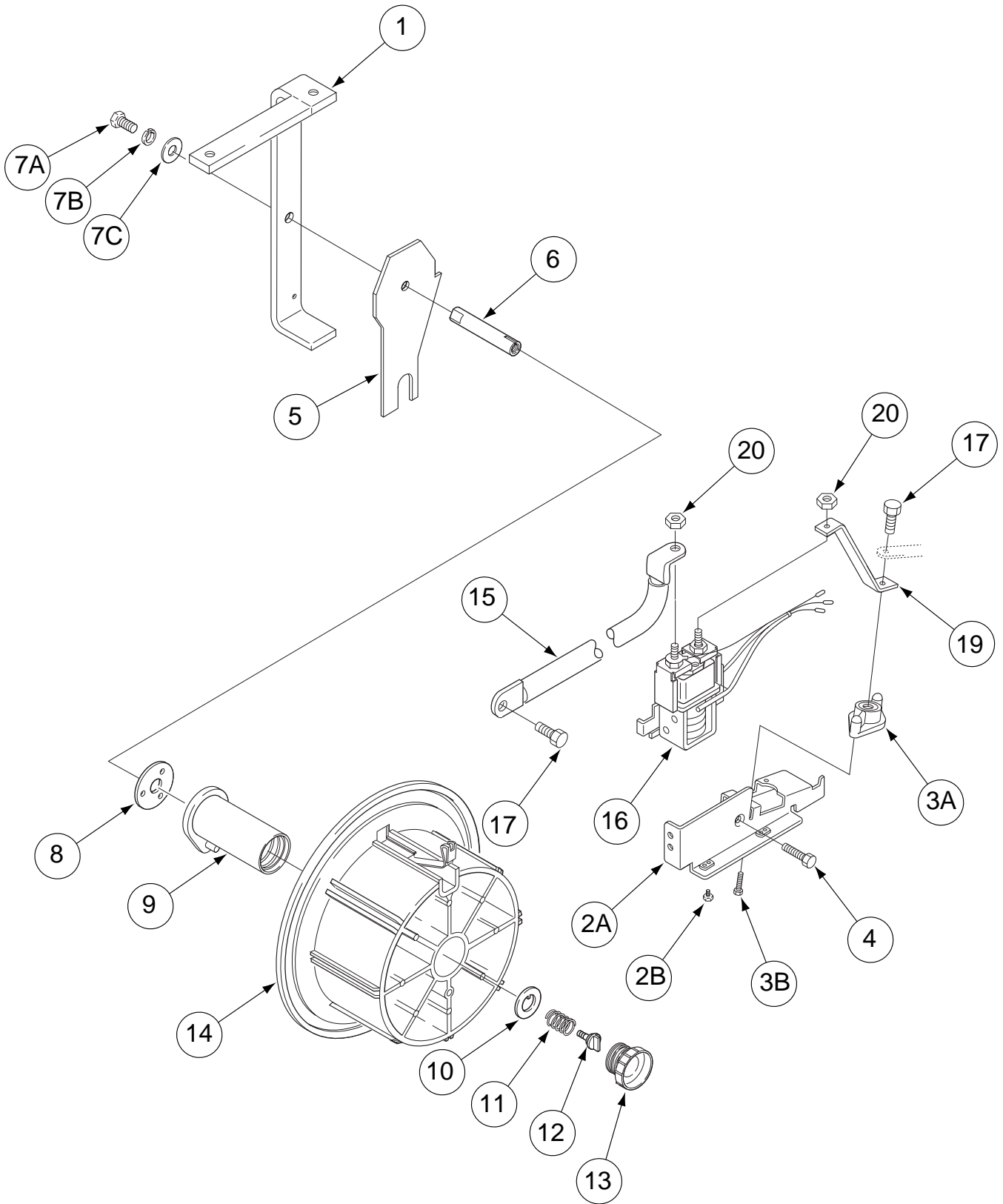
Indicates a change this printing.

Use only the parts marked "x" in the column under the heading number called for in the model index page.

ITEM	DESCRIPTION	PART NO.	QTY.	1	2	3	4	5	6	7	8	9
	Gas Solenoid & Support Assembly	M19153	1	X								
1	Solenoid Valve Assembly	S18262	1	X								
2	Female Connector	T11591-5	1	X								
3	Hose Nipple (Male)	T14557-4	1	X								
4	Flex Tubing	T10642-145	1	X								
5	Solenoid Locking Plate	S24283	1	X								
6	Solenoid Support Plate	S24284	1	X								
7	Gas Purge Decal	T13086-154	1	X								
8	Plug & Lead Assembly	S18250-587	1	X								

Index of Sub Assemblies
Sub Assembly Illustration
Index of Sub Assemblies
Sub Assembly Illustration
Index of Sub Assemblies
Sub Assembly Illustration
Index of Sub Assemblies
Sub Assembly Illustration

Reel Stand Assembly



Index of Sub Assemblies

Part Numbers

Index of Sub Assemblies

Part Numbers

Index of Sub Assemblies

Part Numbers

Index of Sub Assemblies

Part Numbers

Indicates a change this printing.

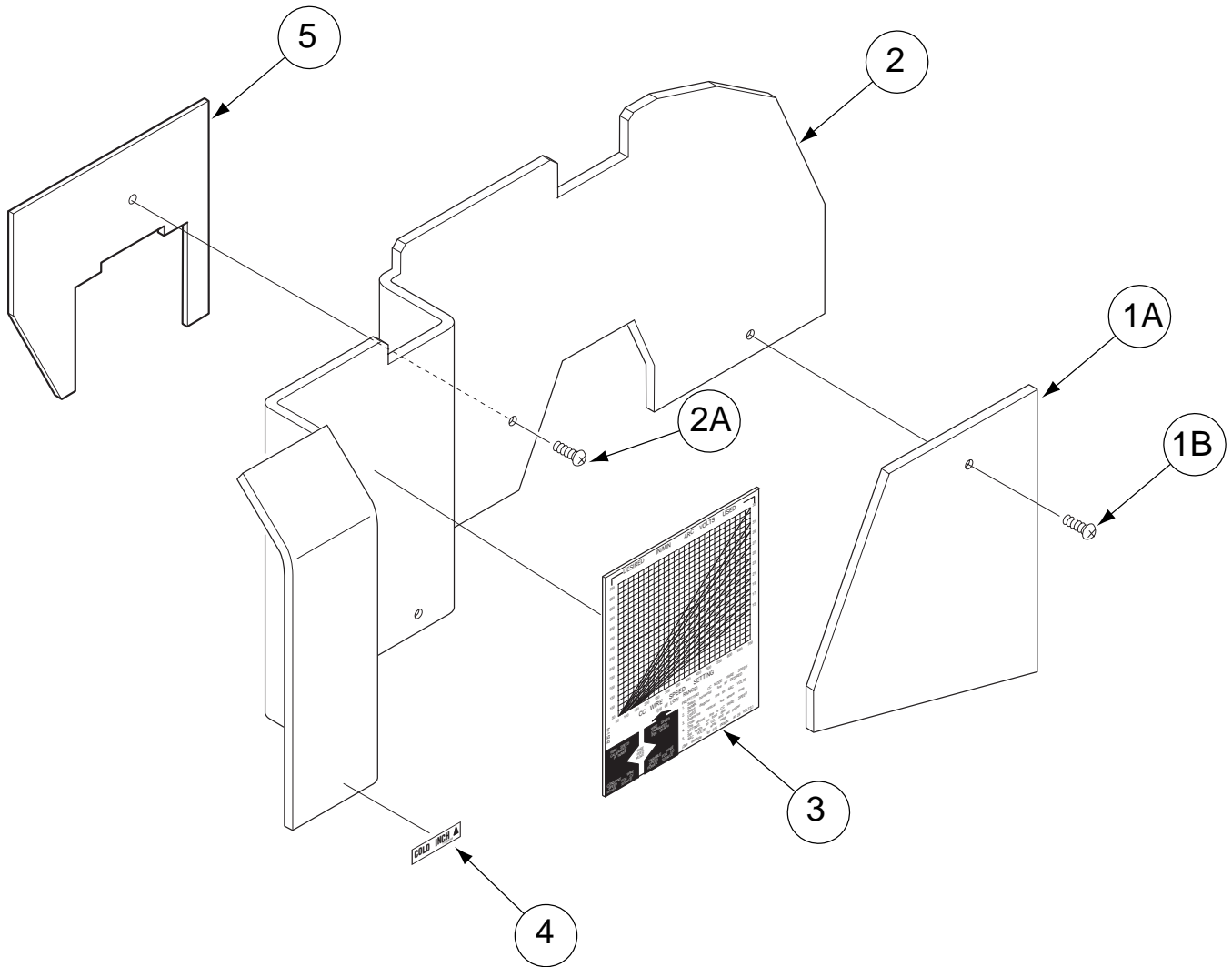
Use only the parts marked "x" in the column under the heading number called for in the model index page.

ITEM	DESCRIPTION	PART NO.	QTY.	1	2	3	4	5	6	7	8	9
1	Reel Stand Assembly	M15201	1	X	X							
2A	Contacto Bracket	M19156	1	X	X							
2B	Insulated Fastener	T15088	2	X	X							
2C	Support Nut (Not Shown)	S14020-1	2	X	X							
3A	Output Terminal Assembly	T14166-9	1	X	X							
3B	Thread Forming Screw	S8025-92	2	X	X							
4	Thread Forming Screw	S9225-46	1	X	X							
5	Brake Plate	S24286	1	X	X							
6	Spindle Shaft	S18138	1	X	X							
7A	1/2-13 x 1.50 Hex Head Cap Screw	CF000052	1	X	X							
7B	Lock Washer	E106A-15	1	X	X							
7C	Plain Washer	S9262-14	1	X	X							
8	Friction Washer	S17435	1	X	X							
9	Spindle	M14560	1	X	X							
10	Keyed Washer	T12965	1	X	X							
11	Spring	T11862-14	1	X	X							
12	Thumb Screw	T14813-A	1	X	X							
13	Retaining Collar	M14587-1	1	X	X							
14	Readi-Reel Adapter	K363-P	1	X	X							
15	Cable Assembly	S18404-1	1	•	X							
16	Contacto Assembly, Includes: Contacto	M17586-1 M15308-2	1 1	• •	X X							
17	#10-32 x .25 Round Head screw	CF000027	2	•	X							
18	Lock Washer (Not Shown)	E106A-1	2	•	X							
19	Bus Bar	S24265	1	•	X							
20	1/2-13 Hex Nut	CF000027	1	•	X							

#

Index of Sub Assemblies
 Sub Assembly Illustration
 Index of Sub Assemblies
 Sub Assembly Illustration
 Index of Sub Assemblies
 Sub Assembly Illustration
 Index of Sub Assemblies
 Sub Assembly Illustration

Box Cover Assembly



Index of Sub Assemblies

Part Numbers

Index of Sub Assemblies

Part Numbers

Index of Sub Assemblies

Part Numbers

Index of Sub Assemblies

Part Numbers

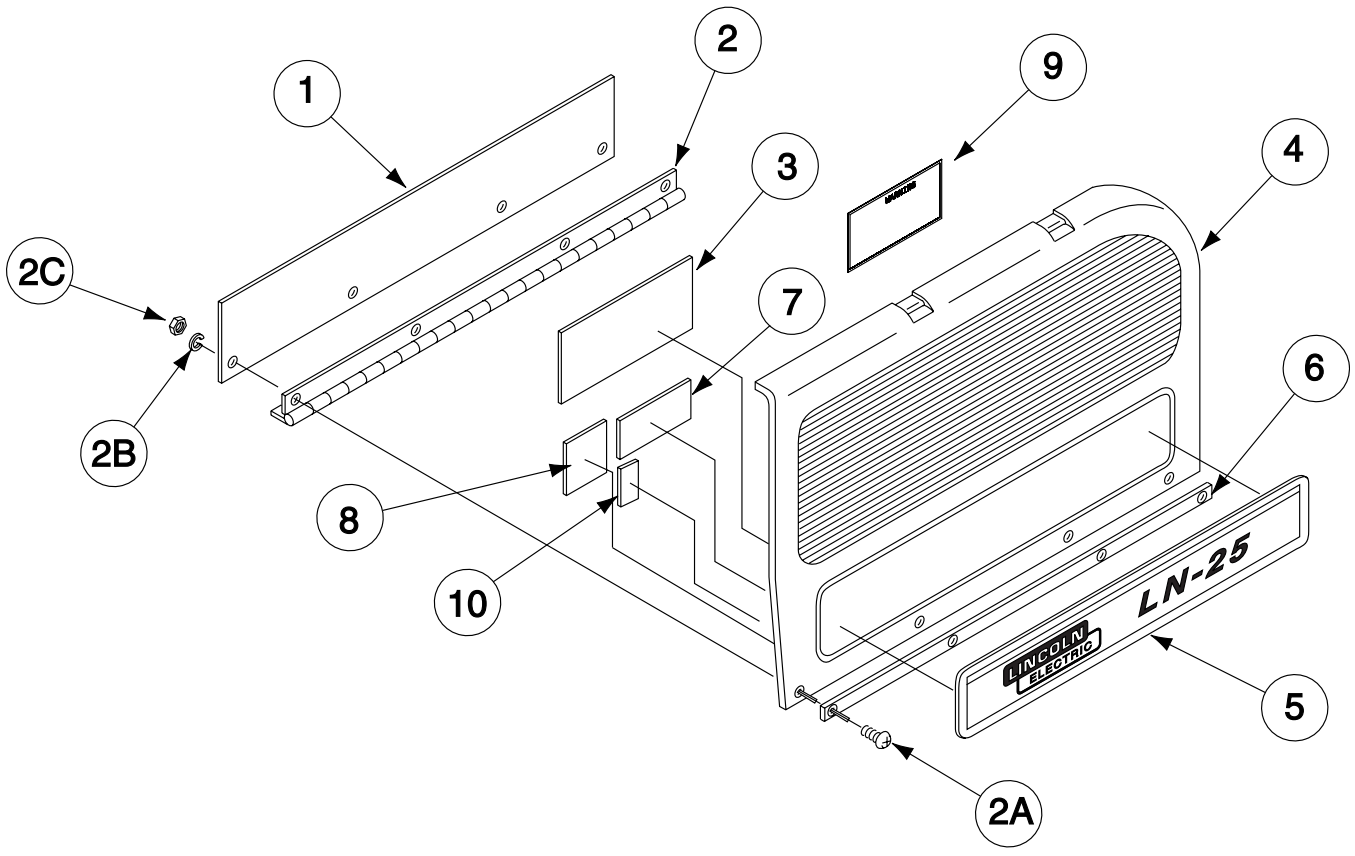
Indicates a change this printing.

Use only the parts marked "x" in the column under the heading number called for in the model index page.

ITEM	DESCRIPTION	PART NO.	QTY.	1	2	3	4	5	6	7	8	9
1A	Stud Cover	S24289	1	X	X	X						
1B	Thread Forming Screw	S9225-30	1	X	X	X						
1C	#10-24 Speed nut (Not Shown)	T11525-1	1	X	X	X						
2	Box Cover	M19854	1	X	X	X						
2A	Thread Forming Screw	S9225-30	3	X	X	X						
3	CC Mode Decal	M15242	1	X	X	X						
4	Cold Inch Decal	T13086-99	1	•	X	•						
4	Cold Feed Decal	T13086-196	1	•	•	X						#
5	Contactor Cover	S24264	1	•	X	X						

Index of Sub Assemblies
 Sub Assembly Illustration
 Index of Sub Assemblies
 Sub Assembly Illustration
 Index of Sub Assemblies
 Sub Assembly Illustration
 Index of Sub Assemblies
 Sub Assembly Illustration

Case Door Assembly



Index of Sub Assemblies
Part Numbers

Index of Sub Assemblies
Part Numbers

Index of Sub Assemblies
Part Numbers

Index of Sub Assemblies
Part Numbers

Indicates a change this printing.

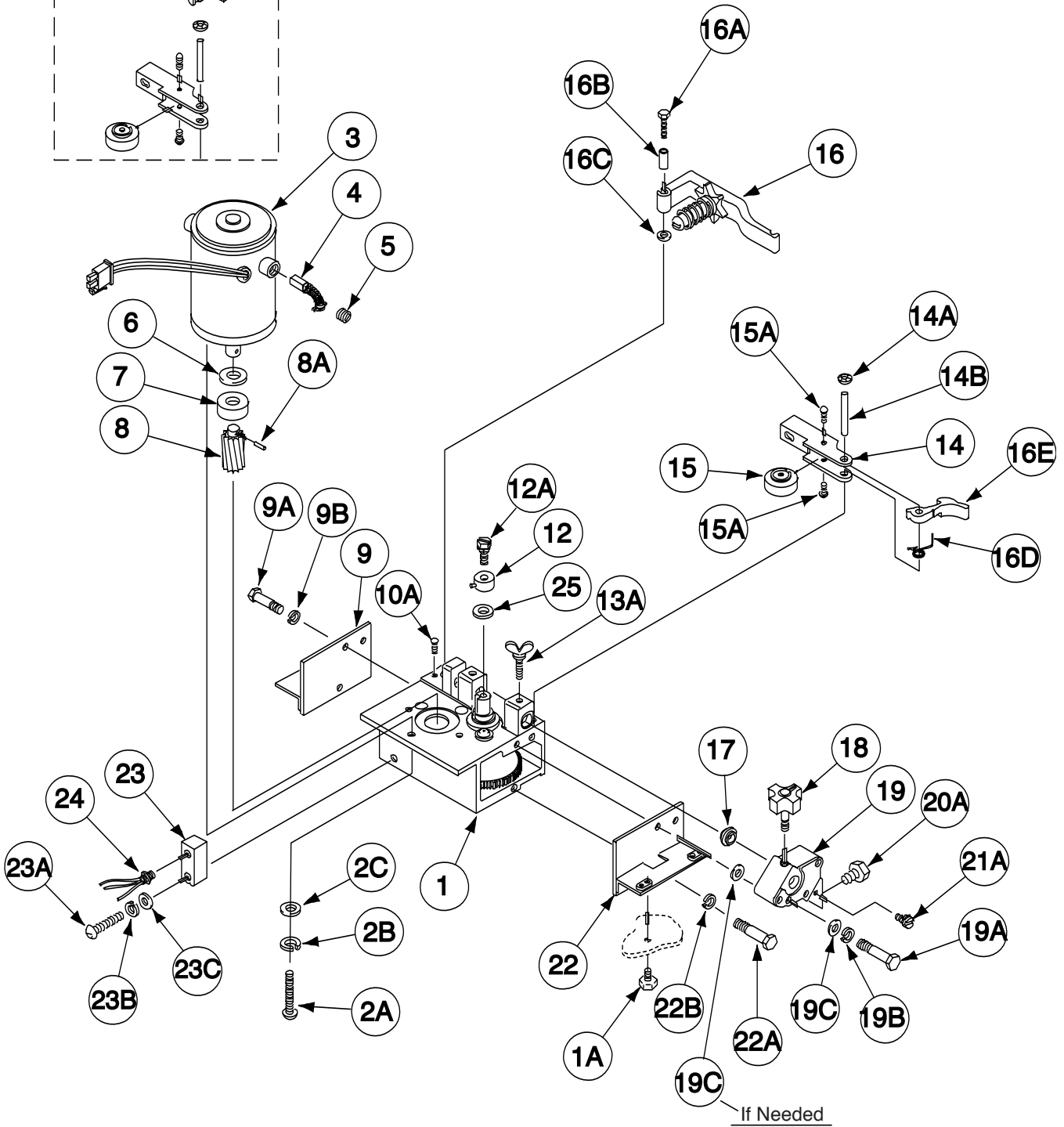
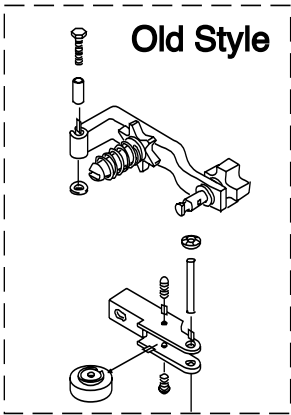
Use only the parts marked "x" in the column under the heading number called for in the model index page.

ITEM	DESCRIPTION	PART NO.	QTY.	1	2	3	4	5	6	7	8	9
	Case Door & Hinge Asbly, Includes:(Items 1, 2, 4, & 6)	L10926	1	X								
1	Hinge Insulator	S20196	1	X								
2	Hinge	T8755-BT	1	X								
2A	#6-32 Pan Head Screw	CF000337	4	X								
2B	Lock Washer	T9695-2	4	X								
2C	#6-32 Hex Nut	CF000005	4	X								
3	Drive Roll Decal	S22739-1	1	X								
4	Case Door	NSS	1	X								
5	Logo Decal	S18241-1	1	X								
6	Door Hinge Strip	S20197	1	X								
7	Warning Decal	T13470	1	X								
8	Gun Warning Decal	T13297	1	X								
9	Warning Decal	S25815	1	X								
10	Wheeled Bin Decal	T13086-201	1	X								

#

Index of Sub Assemblies
 Sub Assembly Illustration
 Index of Sub Assemblies
 Sub Assembly Illustration
 Index of Sub Assemblies
 Sub Assembly Illustration
 Index of Sub Assemblies
 Sub Assembly Illustration

Wire Drive Assembly



Index of Sub Assemblies

Part Numbers

Indicates a change this printing.

Use only the parts marked "x" in the column under the heading number called for in the model index page.

ITEM	DESCRIPTION	PART NO.	QTY.	1	2	3	4	5	6	7	8	9
1	Wire Drive Asbly, Includes (1, 10A, 13A-14B, & 16-20A)	L7333-3	1	X								
	Motor & Gearbox Asbly, Includes (2-2C, 9-9B & 22-25)	L7332-3	1	X								
1A	Insulated Fastener	T15088	4	X								
2	Drive Motor Assembly, (Includes 3-8A)	M15078-4	1	X								
2A	#10-24 RHS	CF000047	3	X								
2B	Lock Washer	E106A-1	3	X								
2C	Plain Washer	S9262-27	3	X								
3	Drive Motor	NSS	1	X								
4	Brush & Spring Assembly	M16718-F	2	X								
5	Brush Cap	M14907-G	2	X								
6	Plain Washer	S9262-70	1	X								
7	Ring Magnet	S18011	1	X								
8	Pinion Gear	S17980-2	1	X								
8A	Roll Pin	T9967-33	1	X								
9	Cover & Flange Assembly	S18119	1	X								
9A	Hex Head Cap Screw	CF000012	2	X								
9B	Lock Washer	E106A-2	2	X								
10A	Drive Screw	S8025-19	1	X								
12	Collar Assembly	S21193	1	X								
12A	Sems Screw	T10082-26	1	X								
13A	Thumb Screw	T15046	2	X								
14	Idle Roll Arm & Bearing Asbly, Includes (15 & 15A)	S16666-1	1	X								
14A	Speed Clip	T10982-7	1	X								
14B	Groove Pin	T10580-9	1	X								
15	Bearing & Shaft Assembly	T13244	1	X								
15A	Drive Screw	S8025-19	2	X								
16	Quick Release Assembly	M19266	1	X								
16A	Hex Head Cap Screw	CF000069	1	X								
16B	Pivot Spacer	S10918-7	1	X								
16C	Plain Washer	S9262-103	1	X								
16D	Torsion Spring	S24300	1	X								
16E	Latch	S24299	1	X								
17	Locator Bushing	T14031	1	X								
18	Molded Hand Screw	T13858	1	X								
19	Conductor Block	S17798	1	x								
19A	1/4-20 Hex Head Cap Screw	CF000016	2	X								
19B	Lock Washer	E106A-2	2	X								
19C	Plain Washer	S9262-23	As Reqd	X								
20A	Hex Head Cap Screw	CF000020	1	X								
21A	#10-24 Sems Screw	T10082-4	1	X								
22	Cover & Flange Assembly	S18118	1	X								
22A	1/4-20 HHCS	CF000012	1	X								
22B	Lock Washer	E106A-2	1	X								
23	Switch Mounting Housing Assembly	S21227	1	X								
23A	#10-24 RHS	CF000038	1	X								
23B	Lock Washer	E106A-1	1	X								
23C	Plain Washer	S9262-27	1	X								
24	Hall Effect Switch Assembly	S21419	1	X								
25	Shaft Seal	T14034	1	X								

#

Ø This part is obsolete and no longer available.

LN-25

05-11-2006

NSS - Not Sold Separately



Index of Sub Assemblies
 Sub Assembly Illustration
 Index of Sub Assemblies
 Sub Assembly Illustration
 Index of Sub Assemblies
 Sub Assembly Illustration
 Index of Sub Assemblies
 Sub Assembly Illustration

Indicates a change this printing.

Use only the parts marked "x" in the column under the heading number called for in the model index page.

ITEM	DESCRIPTION	PART NO.	QTY.								
			1	2	3	4	5	6	7	8	9
	Wire Size	Conversion Kit	Drive Roll	No. Req'd	Spacer	Outgoing Guide Tube	Outgoing Guide Tube Insert	Incoming Guide Tube Assembly			
	.023/.025	KP653-.025S	M17301-025	1	T14984	S14352-035	S14349-045	T13467-035			
	.030S	KP653-.030S	NSS	1	T14984	S14352-035	S14349-045	T13467-035			
	.035S	KP653-.035S	M17301-.035	1	T14984	S14352-035	S14349-045	T13467-035			
	.035A	KP654-.035A	NSS	1	T14984	S24479-35A	-	S21273-3/64			
	.045/.052S	KP653-.052S	M17302-052	1	T14984	S18033-052	S14349-.052	T13467-052			
	.045C/.052C	KP653-.052C	M17302-052	2	-	S18033-052	S14349-.052	T13467-052			
	3/64A	KP654-3/64A	M17303-3/64A	1	T14984	S24479-3/64A	-	S21273-3/64			
	1/16 Cored S	KP653-1/16	S14541-1/16	2	-	S14352-1/16	S14349-1/16	T13467-1/16			
	1/16A	KP654-1/16A	M17303-1/16A	1	T14984	S24479-1/16A	-	S21273-1/16			
	.068, 3/32 Cored S	KP653-3/32	M17302-3/32	2	-	S14352-3/32	S14349-7/64	T13467-7/64			

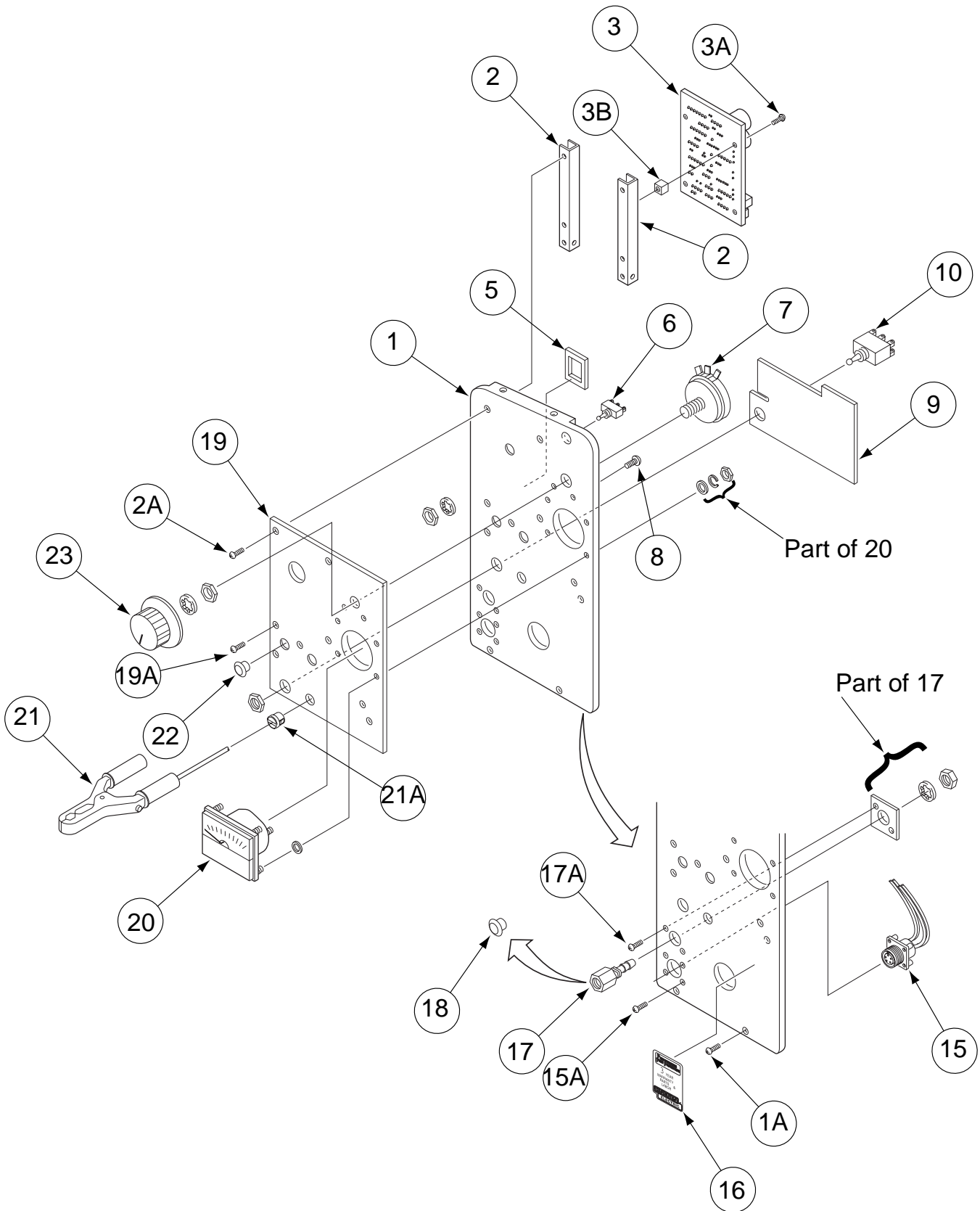
Index of Sub Assemblies
 Sub Assembly Illustration
 Index of Sub Assemblies
 Sub Assembly Illustration
 Index of Sub Assemblies
 Sub Assembly Illustration
 Index of Sub Assemblies
 Sub Assembly Illustration

NOTES

LN-25



Case Front Panel Assembly



Index of Sub Assemblies
 Index of Sub Assemblies
 Index of Sub Assemblies
 Index of Sub Assemblies

Part Numbers
 Part Numbers
 Part Numbers
 Part Numbers

Indicates a change this printing.

Use only the parts marked "x" in the column under the heading number called for in the model index page.

ITEM	DESCRIPTION	PART NO.	QTY.	1	2	3	4	5	6	7	8	9
1	Case Front Panel	L7366-1	1	X	X	X	X	X				
1A	Self Tapping Screw	S8025-98	1	X	X	X	X	X				
	Contactor P.C. Board Asbly, Includes: (Items 2 & 3-3B)	S21415-[]	1	•	•	X	•	•				
2	Bracket	S18406	2	•	•	X	•	•				
2A	Self Tapping Screw	S8025-98	4	X	•	•	•	•				
3	Contactor P.C. Board	L10863-[]	1	•	X	•	•	•				
3A	Self Tapping Screw	S8025-71	4	•	•	X	•	•				
3B	Plastic Expansion Nut	S14020-3	4	•	•	X	•	•				
5	Cable Tie Mount	T13941	1	X	X	X	X	X				
6	Toggle Switch (Hi Low)	T13381-6	1	X	X	X	X	X				
7	Potentiometer	T10812-92	1	X	X	X	X	X				
8	Drive Screw	S8025-8	2	X	X	X	X	X				
9	Polarity Switch Shield	S19736	1	X	X	X	X	X				
10	Toggle Switch (Polarity)	T10800-7	1	X	X	X	X	X				
15	Trigger Connector	S13100-174	1	X	X	X	X	X				
15A	Self Tapping Screw	S8025-73	4	X	X	X	X	X				
16	Warranty Decal	S22127-1	1	X	X	X	X	X				
17	Bulkhead Connector Assembly	T15153	1	•	X	X	X	X				
17A	Self Tapping Screw	S8025-4	2	•	X	X	X	X				
17A	Thread Forming Screw	S9225-4	2	X	•	•	•	•				
18	Plug Button	T10397-4	1	X	•	•	•	•				
19	Nameplate	M15235	1	X	X	X	X	•				
19	Nameplate	M15235-1	1	•	•	•	•	X				
19A	Thread Forming Screw	S9225-61	3	X	X	X	X	X				
20	Voltmeter	T15134	1	X	X	X	X	X				
21	Ground Lead Assembly, Includes:	S17211-1	1	X	X	X	X	X				
	Ground Clamp	M19306	1	X	X	X	X	X				
21A	Grommet	T9274-5	1	X	X	X	X	X				
22	Plug Button	T10397-19	3	X	X	X	X	X				
23	Control Knob	S18425-1	1	X	X	X	X	X				
24	Toggle Switch (CC-CV) (Not Shown)	T13381-6	1	X	X	X	X	X				

Note: When ordering new printed circuit boards indicate the dash number [] of the "Old" board that is to be replaced. This will aid Lincoln in supplying the correct and latest board along with any necessary jumpers or adapters. The dash number brackets [] have purposely been left blank so as to eliminate errors, confusion and updates.

Index of Sub Assemblies
 Sub Assembly Illustration
 Index of Sub Assemblies
 Sub Assembly Illustration
 Index of Sub Assemblies
 Sub Assembly Illustration
 Index of Sub Assemblies
 Sub Assembly Illustration

Indicates a change this printing.

Use only the parts marked "x" in the column under the heading number called for in the model index page.

ITEM	DESCRIPTION	PART NO.	QTY.	1	2	3	4	5	6	7	8	9
	Remote P.C. Board with Brackets, Includes:	S21414	1	X								
	P.C. Board	M16295-[]	1	X								
	Self Tapping Screw	S8025-98	4	X								
	Remote Connector Assembly, Includes:	M17588	1	X								
	Potentiometer	T10812-40	1	X								
	Connector (6 Pin)	S12021-36	1	X								
	Plug Housing	S18249-4	1	X								
	Insulating Washer	S10773-75	1	X								
	Potentiometer Insulation	S18396	1	X								
	Self Tapping Screw	S8025-73	4	X								
	Knob	S18139-2	1	X								
	Lead Clamp	T12563-7	1	X								
	Self Tapping Screw	S8025-82	1	X								
	Plain Washer	S9262-3	1	X								
	Plug & Lead Assembly (Blue)	S18250-316	1	X								
	Plug & Lead Assembly (Red)	S14165-446	1	X								
	Plug & Lead Assembly (White)	S18250-323	1	X								
	Jumper Plug	T13498-22	1	X								

Note: When ordering new printed circuit boards indicate the dash number [] of the "Old" board that is to be replaced. This will aid Lincoln in supplying the correct and latest board along with any necessary jumpers or adapters. The dash number brackets [] have purposely been left blank so as to eliminate errors, confusion and updates.

Index of Sub Assemblies

Indicates a change this printing.

Use only the parts marked "x" in the column under the heading number called for in the model index page.

ITEM	DESCRIPTION	PART NO.	QTY.	1	2	3	4	5	6	7	8	9
	Remote Control P.C. Board with Standoffs, Includes:	S20967	1	X								
	Remote Control P.C. Board Assembly	L9244-[]	1	X								
	P.C. Board Mounting Bracket	S18406	2	X								
	Plastic Expansion Nut	S10420-4	4	X								
	Self Tapping Screw	S8025-14	4	X								
	Potentiometer & Connector Assembly, Includes:	M17251	1	X								
	Potentiometer	T10812-40	1	X								
	Receptacle	S18249-8	1	X								
	Insulating Washer	S10773-75	1	X								
	Potentiometer Insulation	S18396	1	X								
	Receptacle & Lead assembly	S14165-446	1	X								
	Plug & Lead Assembly	S18250-316	1	X								
	Plug & Lead Assembly	S18250-323	1	X								
	Control Knob	S18139-2	1	X								
	Self Tapping Screw, #8 1/2" Long	S8025-98	4	X								
	Self Tapping Screw, #6 3/8" Long	S8025-73	1	X								
	Self Tapping Screw, #6 3/4" Long	S8025-82	1	X								
	Lead Clamp	T12563-7	1	X								
	Plain Washer	S9262-3	1	X								

Note: When ordering new printed circuit boards indicate the dash number [] of the "Old" board that is to be replaced. This will aid Lincoln in supplying the correct and latest board along with any necessary jumpers or adapters. The dash number brackets [] have purposely been left blank so as to eliminate errors, confusion and updates.

Index of Sub Assemblies

Indicates a change this printing.

Use only the parts marked "x" in the column under the heading number called for in the model index page.

ITEM	DESCRIPTION	PART NO.	QTY.	1	2	3	4	5	6	7	8	9
	Remote Cable Assembly, Includes:	K432 -										
	Polarized Socket Connector	(Specify Length) S12020-28	1	X								
	Polarized Pin Connector	S12020-27	1	X								
	Connector to Cable Clamp	S12024-1	2	X								

Index of Sub Assemblies

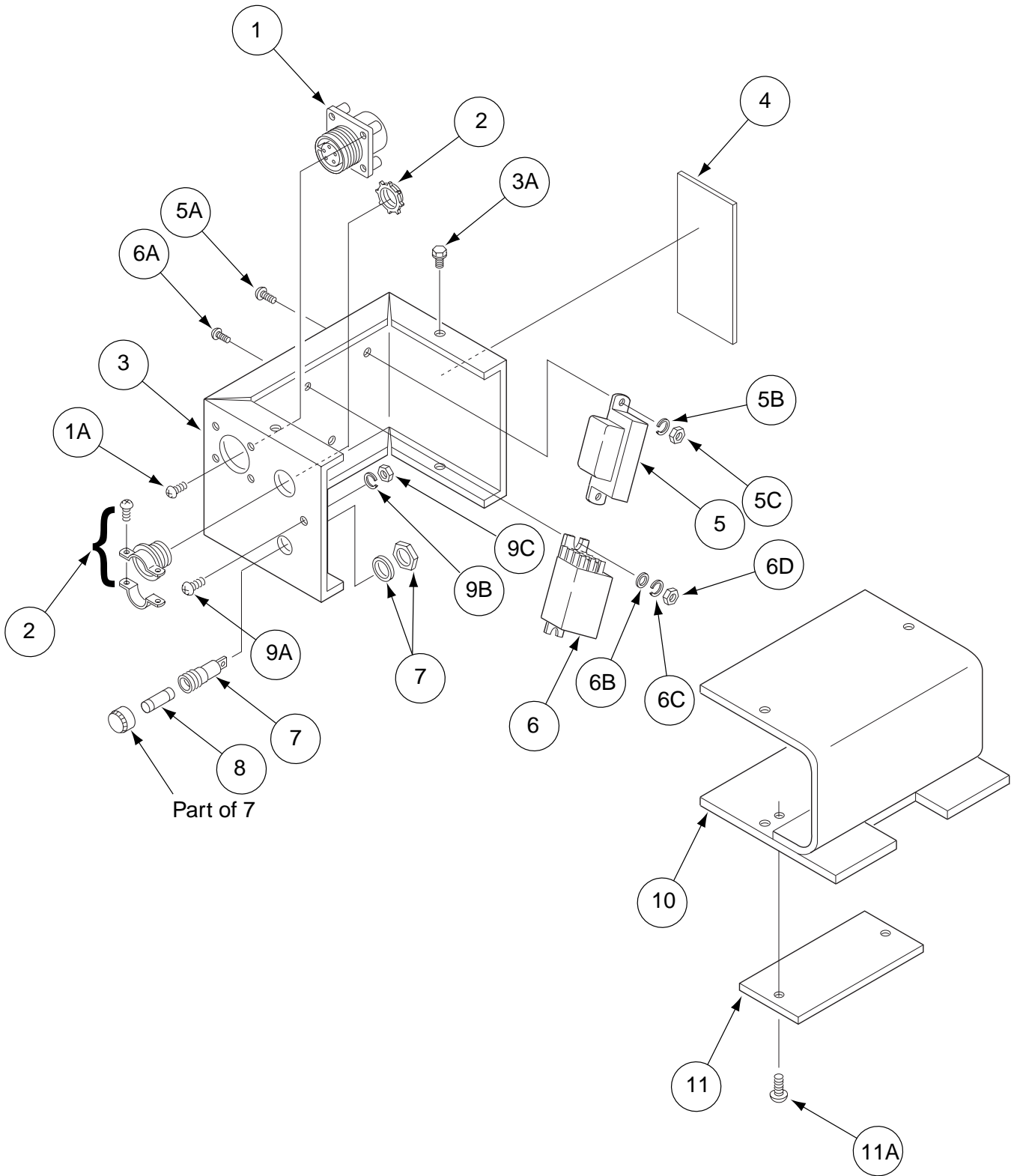
Indicates a change this printing.

Use only the parts marked "x" in the column under the heading number called for in the model index page.

ITEM	DESCRIPTION	PART NO.	QTY.	1	2	3	4	5	6	7	8	9
	Remote Cable Extension, Includes:	K439										
	Polarized Scocket Connector	S12023-12	1	X								
	Polarized Pin Connector	S12020-27	1	X								
	Connector to Cable Clamp	S12024-1	2	X								

Index of Sub Assemblies

K433 Power Source Remote Box



Index of Sub Assemblies

Part Numbers

Index of Sub Assemblies

Part Numbers

Index of Sub Assemblies

Part Numbers

Index of Sub Assemblies

Part Numbers

Indicates a change this printing.

Use only the parts marked "x" in the column under the heading number called for in the model index page.

ITEM	DESCRIPTION	PART NO.	QTY.	1	2	3	4	5	6	7	8	9
1	Connector	S12021-32	1	X								
1A	Self Tapping Screw	S8025-73	4	x								
2	Box Connector	T9639-2	1	X								
3	Control Box Case	L7340	1	X								
3A	Self Tapping Screw	S8025-70	4	X								
4	Warning Decal	T13470	1	x								
5	Transformer Assembly	S18128	1	X								
5A	Round Head Screw	CF000006	2	X								
5B	Lock Washer	T4291-A	2	X								
5C	#8-32 Hex Nut	CF000042	2	X								
6	Relay	S14293-6	1	X								
6A	Round Head Screw	Cf000003	2	X								
6B	Plain Washer	S9262-3	2	X								
6C	Lock Washer	E106A-13	2	X								
6D	#6-32 Hex Nut	CF000005	2	X								
7	Fuse Holder	S10433-1	1	X								
8	Slow Blow Fuse	T10728-11	1	X								
9A	Thread Forming Screw	S9225-30	1	X								
9B	Lock Washer	T9695-1	1	X								
9C	#10-24 Hex Nut	CF000010	2	X								
10	Control Box Base	S18130	1	X								
11	Nameplate	S16622-C	1	X								
11A	Self Tapping Screw	S8025-80	2	X								

Index of Sub Assemblies
 Sub Assembly Illustration
 Index of Sub Assemblies
 Sub Assembly Illustration
 Index of Sub Assemblies
 Sub Assembly Illustration
 Index of Sub Assemblies
 Sub Assembly Illustration

NOTES

Index of Sub Assemblies

Index of Sub Assemblies

Index of Sub Assemblies

Index of Sub Assemblies

LN-25



Indicates a change this printing.

Use only the parts marked "x" in the column under the heading number called for in the model index page.

ITEM	DESCRIPTION	PART NO.	QTY.	1	2	3	4	5	6	7	8	9
	Contactors Assembly	M17586-1	1	X	X							
	Cable Assembly (Contactor to Gear Box brass Block)	S18404-1	1	X	X							
	Cold Inch Switch Assembly	S18250-589	1	X	X							
	Decal (Caution)	T13086-77	1	X	X							
	Decal (Cold Inch)	T13086-99	1	X	X							
	Contactors P.C. Board with Standoffs	S21415-1	1	X	•							
	Self Tapping Screws (Mounts P.C. Board to Case Front)	S8025-98	4	X	•							
	Installation Instructions	L10923	1	X	•							
	Handling Instructions	T14477	1	X	•							
	Plug & Lead Assembly	S18250-368	1	X	•							
	Plug & Lead Assembly	S18250-323	1	X	X							
	Contactors Cover	S24264	1	X	X							
	Bus Bar	S24265	1	X	X							
	E1159/B-.625-4.75 Sleeving	CS000102	1	X	X							
	Wiring Diagram	M19155	1	X	•							
	#10-32 x .25 Round Head Screw	CF000325	2	X	X							
	Lock Washer	E106A-1	2	X	X							
	Installation Instructions	L12319	1	•	X							
	Wiring Diagram	G4679	1	•	X							

Index of Sub Assemblies

NOTES

LN-25

