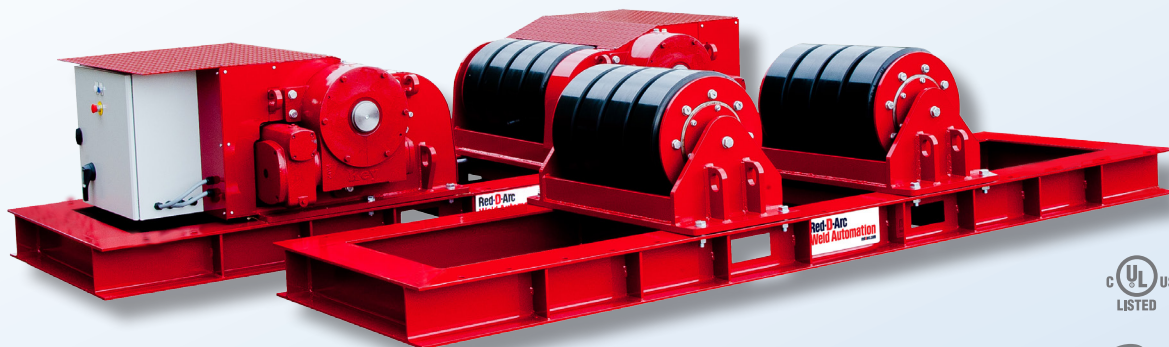


RDA CR125 NA Turning Rolls 125 ton set capacity

Red-D-Arc's RDA CR125 NA turning roll sets feature all-fabricated-steel base construction with wheel brackets that can be manually positioned to accommodate vessels of varying diameters around a constant center-line. Vessel rotation is via a two-motor, two-wheel-drive system which eliminates the need for torque tubes. Drive motors are inverter-controlled variable-frequency AC-type with fan cooling and are fully enclosed for trouble-free operation. Double reduction worm and wheel gearboxes are used for enhanced durability and extended overhaul intervals. Drive and idler wheel shafts are housed in deep-groove-type roller bearings and gearboxes are of aluminum/bronze construction. Both the drive roll and idler roll have forklift slots built into the frames for easy maneuverability. Control boxes have IP65-rated enclosures and utilize variable-frequency AC-control electrical systems with full UL and CE certification. In addition, all our conventional turning rolls have been tested and certified by UL to establish safe working loads - a first in the weld automation industry.

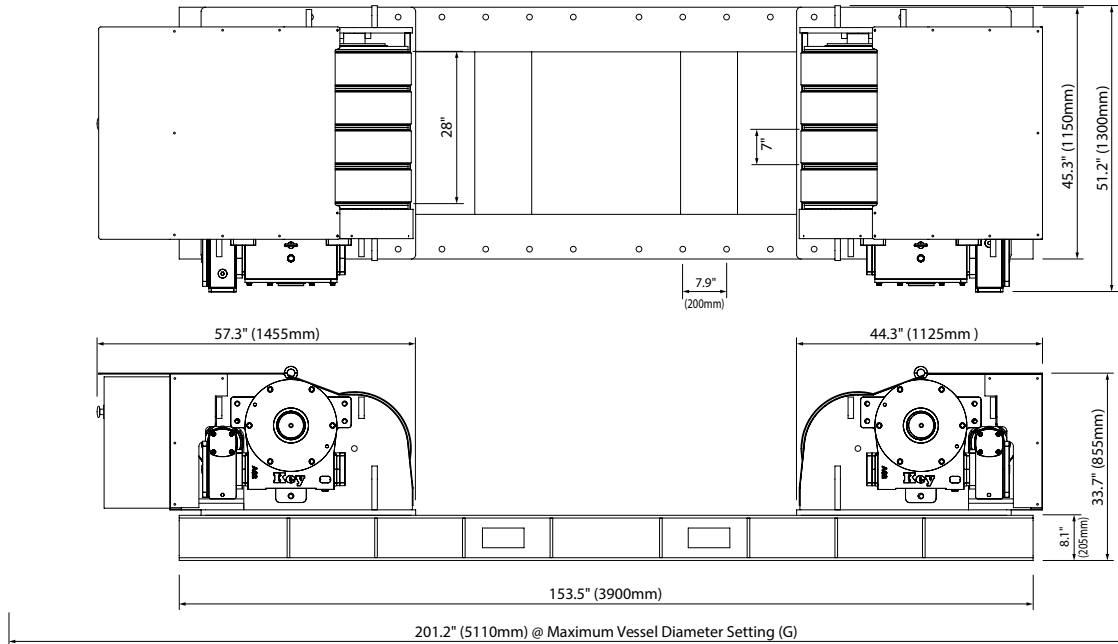


Specifications

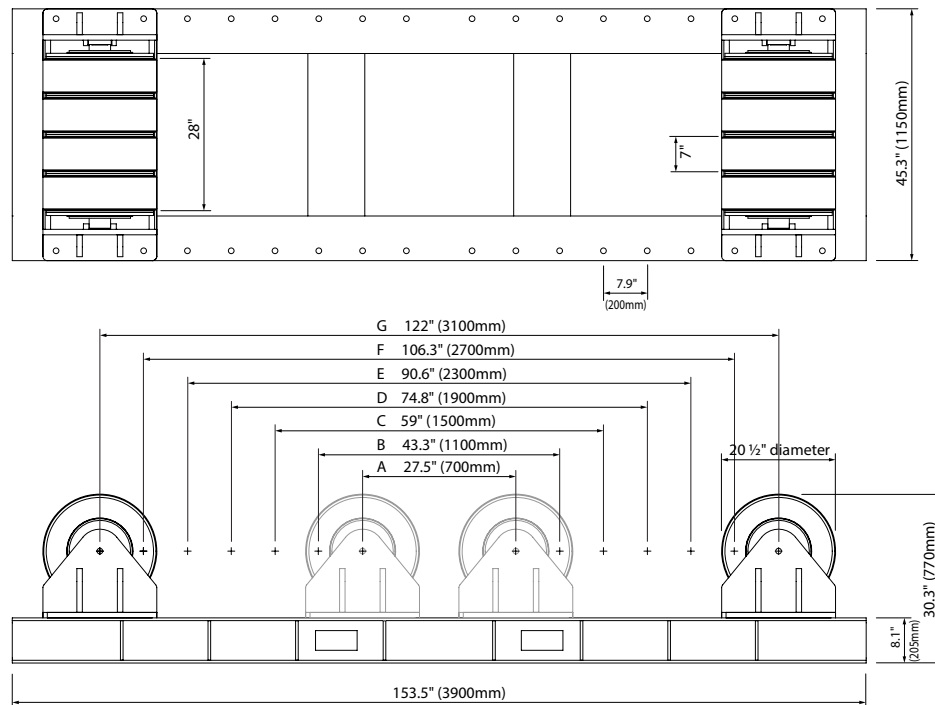
Model	RDA CR125 NA turning roll set (drive and idler)
Load Carrying Capacity, Drive	62.5 ton maximum
Load Carrying Capacity, Idler	62.5 ton maximum
Load Carrying Capacity, Set	125 ton maximum
Rotation Capacity, Drive Roll	200 ton maximum
Wheel Centre Distance	27.5, 43.3, 59, 74.8, 90.6, 106.3, 122 in (700, 1100, 1500, 1900, 2300, 2700, 3100 mm)
Vessel Diameter Capacity	22.4 in to 267.7 in (570 mm to 6800 mm)
Rotation Speed Range	5.1 to 51.1 in/min (130 to 1300 mm/min)
Tire Type	Polyurethane, A95 durometer rating
Wheel Size	20.5 in diameter x 28 in wide
Five Function Control	Push Button Pendant, 100 ft cable (forward/stop/reverse/speed control/emergency stop)
Optional Rotation Speed Foot Control	FT-1VAR-100 (single pedal) with 100 ft control cable
Optional Directional Foot Control	FT-2DIR-100 (double pedal) with 100 ft control cable
Rotation Drive Motors	2 x 3.0 kW with fan cooling
Primary Input Power	380 to 480 V, 3 phase, 50/60 Hz (optional 600 V, 3 phase, 60 Hz available)
Input Current at Rated Load	17.8 A
Weight, Drive	7716 lb (3500 kg)
Weight, Idler	4762 lb (2160 kg)
Control Box Ingress Protection Rating	IP65
Control Box Electrical Certification	UL508
Loading Capacity Certification	UL2011

Red-D-Arc **Welderrentals**, an Airgas company, rents and sells welding and weld-positioning equipment - around the world.

RDA CR125 NA Turning Rolls 125 ton set capacity
 Drive Roll



Idler Roll



Vessel Diameter Ranges

Setting	Minimum	Maximum	Setting	Minimum	Maximum	Setting	Minimum	Maximum	Setting	Minimum	Maximum
A	22.4" (570mm)	45.3" (1150mm)	C	70.9" (1800mm)	118.1" (3000mm)	E	118.1" (3000mm)	196.9" (5000mm)	G	169.3" (4300mm)	267.7" (6800mm)
B	45.3" (1150mm)	82.7" (2100mm)	D	94.5" (2400mm)	157.5" (4000mm)	F	145.7" (3700mm)	236.2" (6000mm)			